

FABJET PRO

Production Capacity of up to 13,000 sqm/day

Introducing the FabJet Pro, our latest leap in digital textile printing innovation. With a remarkable production capacity of up to 13,000 square meters per day, the FabJet Pro redefines speed, quality, and efficiency in the industry. Designed for ultra-wide format direct-to-fabric printing up to 3.2 meters.

Equipped with 32 Kyocera and 48 Konica Minolta Print Heads with a sticky belt system, the FabJet Pro ensures unparalleled precision and clarity in every print. This state-of-the-art machine is engineered to meet the highest demands of productivity while maintaining exceptional quality, making it the perfect choice for forward-thinking textile manufacturers seeking to elevate their production capabilities.

ADVANCE TECHNOLOGY

Sync Optima Enabled

SyncOptima is a groundbreaking digital textile printing technology that sets the standard for precision and efficiency. This advanced system optimizes carriage and belt movement to ensure flawless synchronization across our printing ecosystem. The result is consistently high-quality prints delivered at impressive speeds, meeting the highest industry standards for performance and reliability.

Optimized Fabric Feeding Process

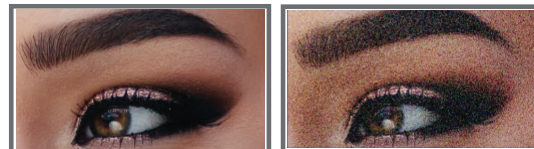
Our upgraded roller system ensures wrinkle-free fabric feeding with consistent tension across the entire width.

Turbocharged Nozzle Pumping

The turbocharged design ensures efficiency, enabling superior performance without sacrificing productivity. Helps to Achieve greater depth and larger drop size while maintaining optimal speed.

Variable Drop Printing

Variable drop printing option helps in achieving more accurate colour tones along with smoother colour gradience.

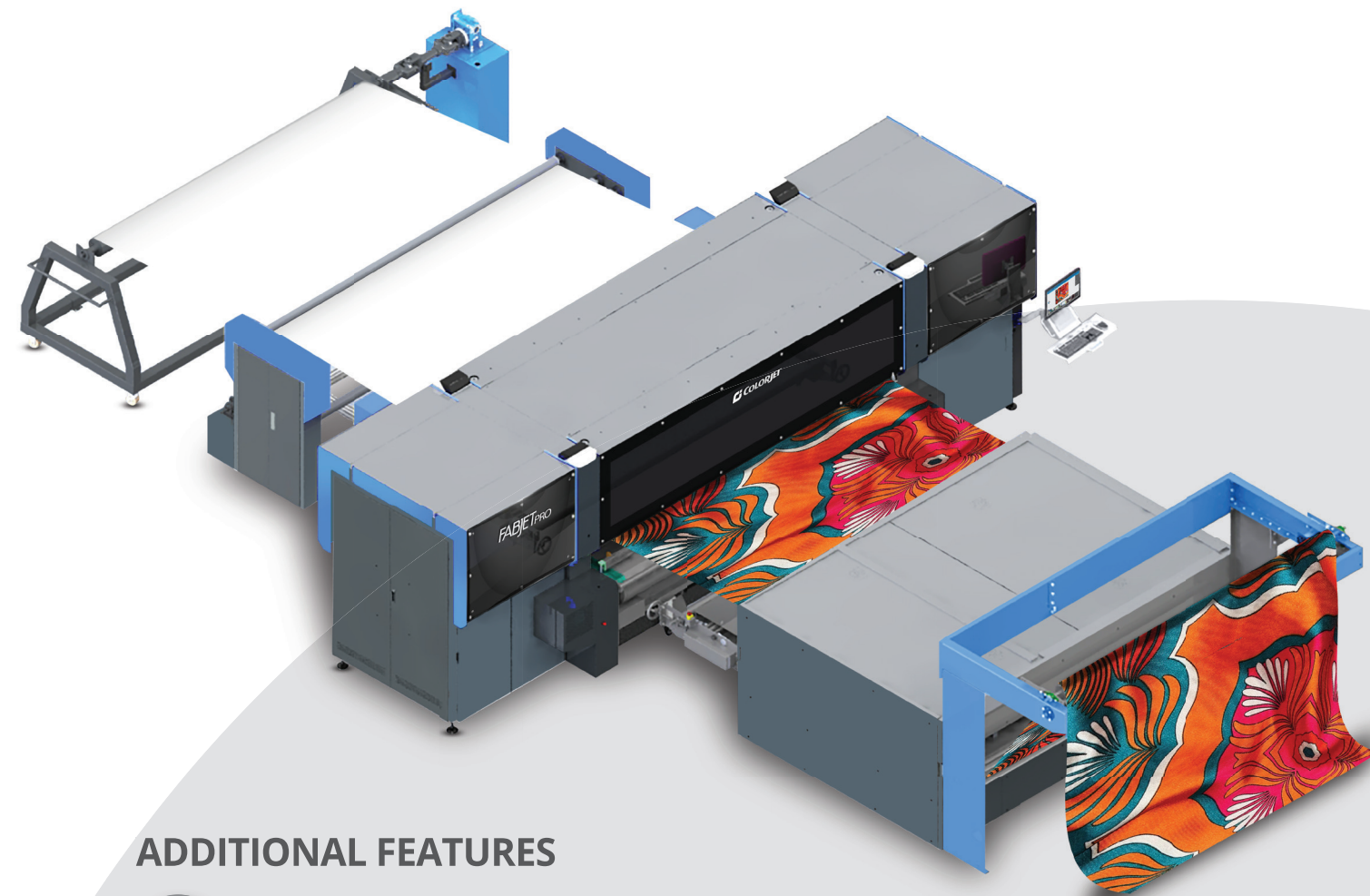


Improved Safety Standards

A safety rope sensor and emergency staff switch have been added for enhanced safety during operations, along with four emergency switches. Eye bolts allow for easy machine lifting via hoist.

New ergonomic designs for ease of use and maintenance:

The FabJet Pro boasts a new ergonomic cabinet design, maximizing access to critical components for easy maintenance and cleaning.



ADDITIONAL FEATURES



Efficient Ink Supply System

A complete system enabling the smooth running of the ink and providing high printing stability in high industrial production. Peristaltic pumps help keep the ink supply at a constant level. Negative pressure is detected and adjusted continuously to prevent unwanted ink dropping and spilling of the print head. Efficient Ink degassing system to remove air bubbles in ink tubes to avoid ink starvation assuring the highest print quality.



Controlled Airflow while Printing

Any kind of forced Airflow can result in uneven jetting or cross-firing of water-based inks which can ultimately effect the drop placement.



Capping and Wiping System

Automatic Capping system prevents inks from drying within the print head when the printer is not in use & On-demand wiping system effectively removes ink, dust & debris from the print head.



AIVC[®] Tech

ColorJet Waveform ensures that the jetting adapts to the viscosity of the inks irrespective of the temperature of the inks.



Micron Precision Encoder

It helps increase accuracy in aligning carriage and belt movement.



Efficient Tension Controller System

The machine features OsciPlus[™] precise rollers for optimal tension control and seamless fabric feeding, regardless of GSM, weave, crimp, elasticity, or skewness. The tension roller effectively balances uneven tension, ensuring smooth and consistent media movement.



Modular Feeding System

A modular feeding system to incorporate large-size rolls for continuous printing.

Redefines Speed, Quality,
and Efficiency.

SPECIFICATIONS

FabJet Pro B32							
Model			PB8326		PB8489		PB8329
Printing Technology			Drop-on-demand, Piezoelectric Inkjet				
No. of Print Heads			32 KY		48 KM		32 KM
Print Heads		Type	Industrial Grade Jetting Assemblies				
	Resolution		Upto 2400 DPI		Up to 1440 DPI		Up to 1440 DPI
	Height Adjustment		Up to 30mm				
	Cleaning Method		Pressure Purge and Wiping				
	Webbing Control		Piezoelectric Actuators				
Inks	Types		Reactive		Pigment/Reactive/Disperse		Pigment/Reactive/Disperse
	No. of colors		8				
	Supply		10 Ltr, Bulk Ink Supply System with inline degassing				
Fabric	Types		Cotton, Viscose, Silk, Wool		Cotton, Viscose, Polyester, Polyamide, Silk, Wool		Cotton, Viscose, Polyester, Polyamide, Silk, Wool
	Max. Printing Width		Up to 3200mm				
	Roll Diameter		400mm				
Fabric Drying System			Electric Heaters				
Operating Interface			Touch Screen				
Printing Interface			USB 3.1				
RIP Software Supported			NeoStampa (ColorJet Editions)				
File Format			JPEG, TIFF, BMP/PDF (RGB, CMYK)				
Power Supply			9.5 kW / 3 Φ - 15 A				
Operating Conditions			Temperature: 18 to 28°C, Humidity: 60±5% RH (non-condensing)				
Printer Dimension / Net Weight			2835 x 6572 x 2041mm (LxWxH) / 6500 Kg approx.				
Feeder Dimension / Net Weight			1200 x 3907 x 1398mm (LxWxH) / 950 Kg approx.				
Speed In Sqm/hr)	Print DPI	Passes	PB8326	Print DPI	PB8489	Print DPI	PB8329
Mode 1	508x1200	2	654	360x720	535	360x720	355
Mode 2	508x1800	3	446	360x1080	350	360x1080	235
Mode 3	508x2400	4	318	360x1440	260	360x1440	175

Efficiency Guaranteed.
FABJETPRO

